



# RENAULT TRUCKS E-Tech Traffic

[renewal-trucks.com](https://renewal-trucks.com)

**> RENAULT TRUCKS  
E-TECH**



**RENAULT  
TRUCKS**



## Red EDITION



### Red EDITION

#### CAB & COMFORT

- LED interior front & rear lighting
- Air Conditioning
- Foldable, heated & electric mirrors
- Driver & passenger frontal airbags
- Rear zone with independent locking
- Reinforced driver 4-ways adjustment with armrest

#### MEDIA & CONNECTED SERVICES

- Wireless smartphone charger
- Primary color display 7"
- Multimedia display 8" with wireless smartphone replication

#### DESIGN

- Upper front bumper, rear lights corners & lateral door rail painted

#### DRIVING EXPERIENCE & SAFETY

- Cruise control & speed limiter
- Automatic LED low beams
- Rear parking sensors

#### OPTIONAL PACKS

##### Storage pack\*

- Foldable passenger bunk with storage
- Rear panel with front access
- Sliding glove box
- Upper dashboard storage

##### Driver assist pack\*

- Front fog lamps
- Automatic wipers
- Automatic low/high beams

\*as standard on Red EDITION Exclusive

## Personalize your vehicle

### PARK ASSIST PACK

- Rear camera
- Front, rear & lateral parking sensors
- Blind spot warning
- Wide view side mirror

## Red EDITION Exclusive



### Red EDITION Exclusive

In addition to Red EDITION

#### CAB & COMFORT

- Keyless with start button & rear zone with independent locking
- Foldable passenger bunk 2 seats with storage and tablet
- Sliding glove box
- Closed upper dashboard storage & aluminium brushed dashboard finishing

#### MEDIA & CONNECTED SERVICES

- Navigation display 8" with wireless smartphone replication

#### DESIGN

- Red EDITION Exclusive stickers
- Full painted body
- Dark grey aluminium wheels with red insert
- Aluminium rear step protection

#### DRIVING EXPERIENCE & SAFETY

- Automatic switch low/high beams
- Automatic wipers
- Front fog lamps



### DELIVERY PACK

- 270° rear panel doors
- Lateral rear anchorages
- Rear 12V socket
- Rear left door lock

# 100% electric matching your business needs



PANEL VAN



VAN CREW



PLATFORM CAB

#### → RANGE

- Up to 394 km WLPT (urban cycle)

#### → MAX. EFFECTIVE INTERIOR HEIGHT (H2)

- 1.9 m

#### → PAYLOAD

- Up to 1160 kg

#### → GVW

- 3070 kg

#### → LOW LOADING SILL HEIGHT

- 51.5 cm

#### → REDUCED WIDTH

- 1.95 m

#### → TOWING CAPACITY

- Up to 920 kg

#### → BATTERY

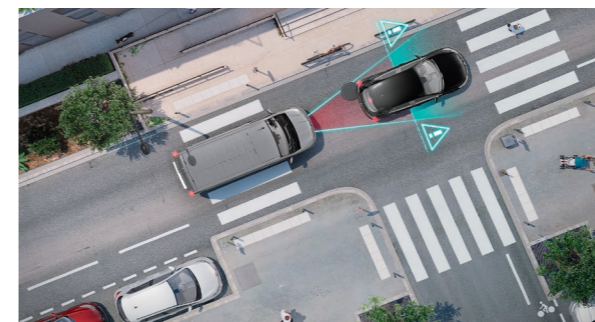
- 52 kWh\*

\*Covered with 8 years warranty or 160000 km (State of Health 66% guaranteed)

## More safety

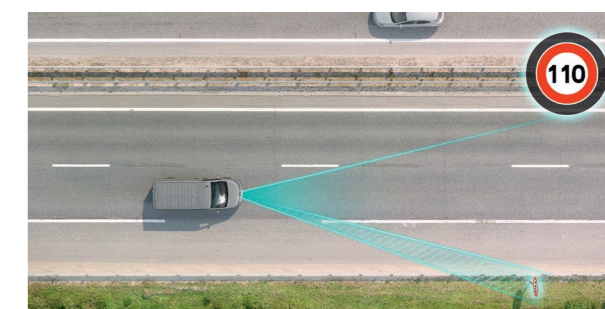
### As standard on Red EDITION

- E-call
- Driver Drowsiness Detection (DDD)
- Tire Pressure Monitoring System (TPMS)
- Event Data Recorder (EDR)
- Alcohol lock predisposal



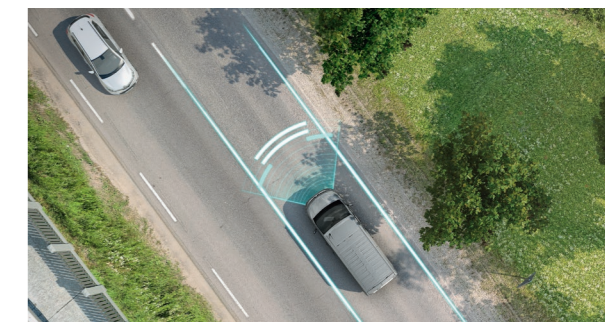
### ACTIVE EMERGENCY BRAKING SYSTEM (AEBS)

In the event of a head-on collision risk, the system warns drivers so that they can take appropriate emergency action. The system brakes automatically if drivers do not react despite the various alerts emitted.



### INTELLIGENT SPEED ASSISTANCE (ISA)

Display the speed limit on instrument panel and navigation screen to prevent overspeed.



### LANE DEPARTURE WARNING SYSTEM (LDWS)

An audible warning signal alerts the driver of unintentional drifting from the vehicle's trajectory.

# Renault Trucks services dedicated to electric vehicles for total peace of mind



With 1400 dealers in Europe, there is always one close to you.

- Renault Trucks network expertise in business to business
- Extended workshops opening hours and fast service (incl. Saturdays\*)
- Customised service contracts
- Optimised uptime with a one stop maintenance\*
- 24/7 assistance and Towing for Electric\*
- All-in-one financing offer (incl. repair & maintenance)

\*Option, that includes: unlimited number of tows for breakdown + two free tows for battery discharge unrelated to product defect (within the 2 first years of the service contract)

- Renault Trucks full charging support through selected partners:
  - Home charging: personalised electric diagnosis, installation & maintenance.
  - Public charging with Mobilize Power Solutions: charge everywhere, plan your journey with the route planner and get preferred prices with your Renault Trucks Red EDITION card. Benefit from a fleet management platform for direct billing and fleet monitoring.



[renault-trucks.com](https://renault-trucks.com)



**RENAULT TRUCKS**